



HO-CHUNK BINGO HOUSE RULES

1. You must be 18 years of age to play regular session bingo and 21 years of age to play special sessions where alcohol is served.
2. At this time, we do not accept personal checks or debit/credit cards.
3. Booth sales are on a first come, first served basis. Please be courteous to fellow players and do not cut in line or save a place in line for others.
4. Please limit your purchases for up to two players per person. Example: One person can purchase for two players.
5. It is your responsibility to present your Players Club Card to the sales person prior to completing your purchase of your admission packet. Once the transaction is completed and a receipt is printed, points will not be added and we will not re-do the sale.
6. Bingo cards are only valid on the date they are purchased.
7. One discount per person per session. Discounts cannot be used in multiples.
8. Bingo calendar and game program may be changed without notice.
9. Electronic Bingo - Only one machine per person. Machine malfunctions-- voids all prizes & plays. You must have a valid receipt for your electronic purchase prior to taking a machine from the rack.
10. All un-played/uncashed credits in the machines will be forfeited at the end of the session.
11. It is the player's responsibility to announce or yell "Bingo" to alert the caller to stop the game. Employees cannot yell "Bingo" for you. The caller must hear you so the game is stopped.
12. Players must yell "Bingo" prior to the next ball being called. Once the caller closes a game, no other bingos will be honored.
13. If your receipt is not signed when you bingo, you will not be paid.
14. To determine prize amounts, divide total number of winners into regular scheduled amount. Prizes will be divided equally according to the level played. Minimum prize amounts are \$10.00.
15. You must be present in the Bingo Hall at time of winning to claim prize.
16. Only one bingo per face will be honored.
17. We do not guarantee that duplicate cards will not be on the floor or in the electronic bingo machines.
18. You must use a dauber on your paper cards, which includes the Lucky 3, Do-It-Yourself and Bonanza games. All cards must be daubed.
19. No refunds or exchanges will be made for unused or un-played paper specials or packages. We are not responsible if you play on wrong game sheet or the loss of any game sheets.
20. Our doors open at 4pm Tuesday-Saturday, and at 11am on Sundays, no one will be admitted prior to these times for any reason.
21. No solicitation or panhandling of any kind allowed. No exceptions.
22. Must present a valid government issued ID AND Social Security Card to claim any cash prize over \$1200, and any pull tab prize over \$600. ID AND Social Security card required for any promotional cash or items and if these are not furnished at time of winning, prize is forfeited.
23. Drawing tickets cannot be bent or marked other than the requested information filled out. If your ticket is drawn and it has any markings on it or is bent, it will be declared invalid and another name will be drawn.
24. The use of abusive language and disruptive behavior will not be tolerated.
25. No Alcohol allowed in the Bingo Hall during regular session, only allowed at certain special sessions.
26. No Primary Management Official, employee of the Nation in any of its Gaming Facilities, Commissioners, President, or Department of Justice and tribal inspector's office employees may participate in any of the Nation's Class II or Class III marketing or promotional programs offered by any of the Nation's Gaming Facilities. Licensed employees of Ho-Chunk Gaming Wisconsin Dells are not allowed to play bingo.
27. Complaints or disputes should be directed to the floor manager and will follow the procedures in place for Player Disputes.
28. Ho-Chunk Bingo is not responsible for any lost or stolen items.

053017CM

HO-CHUNK GAMING

WISCONSIN DELLS
BINGO

S3214 Cty Rd BD

Baraboo, WI 53913

1-800-746-2486 ext. 2008

Hours:

Tuesday-Saturday Evenings:

Doors Open & Sales Start @ 4 pm,

Warm-ups at 6 pm, &

Regular Session at 6:30pm

Sunday Matinee:

Doors Open & Sales Start @ 11 am,

Warm-Ups at 12:30pm, &

Regular Session at 1 pm

**Regular Sessions: Level 1- \$10, Pays \$150, Level 2- \$25, Pays \$300,
Level 3 - \$40, Pays \$450**

**Double Pay Sessions: Level 1- \$10 pays \$300, Level 2- \$25 pays \$600,
Level 3- \$40 pays \$900**

**Stimulus Sessions: One level- \$11, First winner pays \$350, Second
winner gets \$200 on regular games only.**



WARM-UPS Games 1-4 (EXTRA)

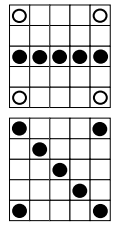
3-On -\$2 9-On -\$5

Regular Bingo or 4 Corners Pays \$100

Get Bingo in 4 #s & and win double.

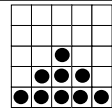
Game 5 Warm-Up Double Bingo

(4 Corners Count) Pays \$200



Game 13 Crazy Pyramid - Pink (REGULAR)

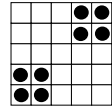
Level 1- \$150 Level 2- \$300 Level 3- \$450



“Cloverleaf” House Special (INCLUDED IN PACK & EXTRA)

Game 14 Two Stamps Gray

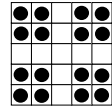
Level 1-\$50 Level 2- \$100 Level 3- \$200



Game 15 Cloverleaf Gray

Level 1-\$100 Level 2- \$250 Level 3- \$400

Cloverleaf starts at 28 #s & \$500, & raises 1 # & \$50 a day. Numbers freeze at 38, Jackpot raises \$50 a day until won.



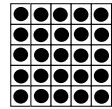
Game 16 Double Action (EXTRA)

1-On \$1 - Blue

Full Card with wild number

37 #s or less - \$1199;

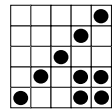
38 #s or more - \$200



Game 17 Line and Stamp - Olive (REGULAR)

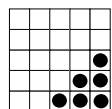
(cannot share numbers)

Level 1- \$150 Level 2- \$300 Level 3- \$450



Game 18 Crazy Arrowhead - Brown (REGULAR)

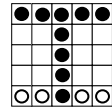
Level 1- \$150 Level 2- \$300 Level 3- \$450



INTERMISSION

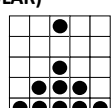
Game 19 Crazy T - Red (REGULAR)

Level 1- \$150 Level 2- \$300 Level 3- \$450



Game 20 Bingo Bowling - Purple (REGULAR)

Level 1- \$150 Level 2- \$300 Level 3- \$450

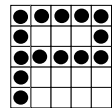


Game 21 Pick a Pet Game (EXTRA)

3on -\$1 Aqua : The letter P

Winner Chooses Envelope & Pet

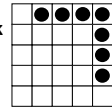
Prizes range from \$100-\$400



“Ho-Chunk” House Special (INCLUDED IN PACK)

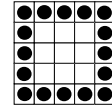
Game 22 7 Around The Corner (s) - Black

Level 1-\$50 Level 2- \$100 Level 3- \$200



Game 23 Large Frame - Black

Level 1-\$100 Level 2- \$250 Level 3- \$400

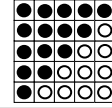


Game 24 Triangle Bingo - Orange (EXTRA) 3-On \$1

Shaded- Spin the Wheel to determine prize

B- \$1000, I- \$800, N-\$700, G-\$600, O-\$500

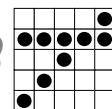
Un-shaded- \$150



Game 25 Crazy Bingo - Aqua (REGULAR)

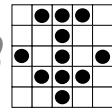
(2 straight lines with wild #)

Level 1-\$150 Level 2- \$300 Level 3- \$450



Game 26 Anchor - Blue Stripe (REGULAR)

Level 1- \$150 Level 2- \$300 Level 3- \$450



LUCKY 3 CONCLUSION

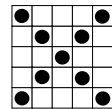
\$150 Consolation.

If there is no winner in the first 3 numbers, we will continue until there is a winner.

“Super Jackpot” House Special (INCLUDED IN PACK & EXTRA)

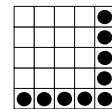
Game 27 Letter X - Orange Stripe

Level 1-\$50 Level 2- \$75 Level 3- \$100



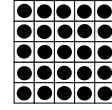
Game 28 Crazy L - Orange Stripe

Level 1-\$100 Level 2- \$150 Level 3- \$200



Game 29 Full Card - Orange Stripe

Level 1-\$250 Level 2- \$500 Level 3- \$750



Starts at 50 #s & \$1000, grows 1 # a day #s

Game 30 Do-It-Yourself (EXTRA)

Single \$1 6-Pack \$5

Your 8 #s in 20 #s or less- Posted Amount

21 #s or more—1st Consolation-\$250,

2nd Consolation- \$100 Jackpot starts at \$10,000 and stays for 10 sessions. On 11th session, jackpot grows \$500 a week.



Game 31 (EXTRA)

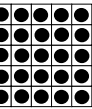
Bonanza Bingo

Assorted

Full Card in 50 #s or less - Posted Amount

51#s or more -1st Consolation \$300, 2nd Consolation- \$150.

Jackpot starts at \$10,000 and stays for 10 sessions. On 11th session, jackpot grows \$500 a week.



Bonanza Swaps Available for \$1.00

Night Owls

(EXTRA) 9-On \$6/ extra 3-On \$1.00

Game 32 Double Bingo

White- \$100 (4 corners count)

Game 33 Telephone Pole

White- \$200

Game 34 Full Card White

Posted Amount

Starts at 48 #s & \$500, grows

1# and \$50 a day, #s freeze at 56.

Jackpot raises \$50 a day until won. Consolation- \$300

